

Housing – Our new Allocation Policy

Nicole Smith

Head of Strategic Housing, Options and Allocations

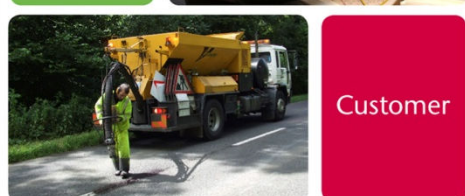
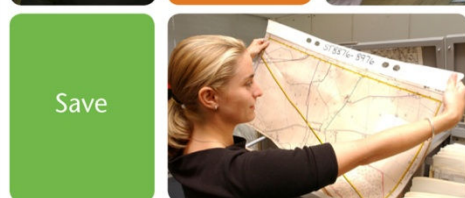




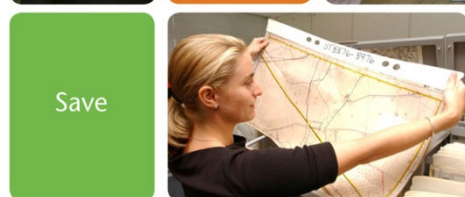
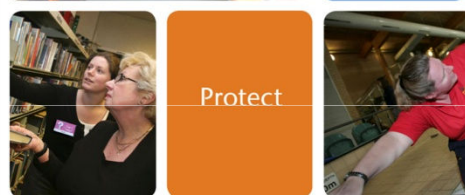
Consultation and reason for change

- Policy was reviewed following the introduction of the Localism Act and the introduction of the new freedoms
- Wide consultation with the public, including the area boards, all those on the register, housing providers, voluntary sector, support providers and many more
- Approved at cabinet in November 2013

The Main Changes



- Local connection to Wiltshire
- Local Homes allocated to Local People
- Creation of an open market register for those with no identified housing need
- Review of the bands
- Introduction of reasons to be excluded from the register
- Allocations made in line with the bedroom standard



Local homes for Local People

- Priority will be given to those with a local connection to the parish or town the vacancy is in, followed by band and eligible date
- If no one bids with a local connection we will look to all the surrounding parish's and towns
- Finally it will be opened to the whole of Wiltshire
- A local connection exclusion group applies



Community



Can do

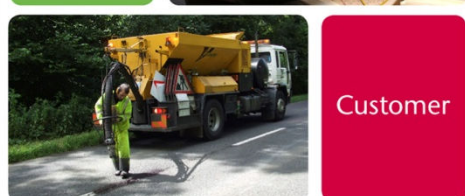
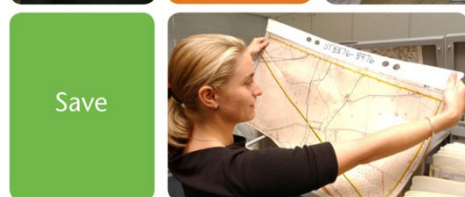
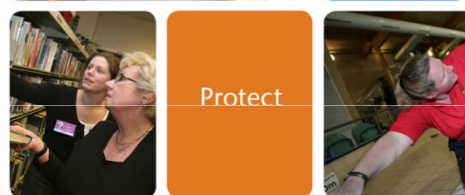


Customer



The New Bands

Band 1 (urgent need)	Statutory requirement Move on Urgent medical or welfare need
Band 2 (high need)	Under occupying and suffering financial hardship Social care
Band 3 (medium need)	No fixed abode Temporary accommodation Supported accommodation Seriously overcrowded Medical and welfare need Under occupying in social housing Other statutory requirements
Band 4 (low need)	Lacking or sharing facilities Overcrowded Armed forces & reserve forces Intentionally homeless Sheltered or extra care
Eligible to bid on selected properties ONLY	
Open Market Register	Low Cost Home Ownership Home Buy Shared Ownership Market rented properties Older people accommodation Specialist accommodation for those with specific needs



The way Forward

- Jan to May – Develop an IT specification and build a new IT system
- Jan to May – Working with staff and providers to develop new procedures, application form and customer leaflets
- June / July – Full testing of the new system
- July / Sept – 8 week transition period from new system to old system
- Launch in Sept 2014



Community

Invest



Can do



Protect



Save



Customer



Questions